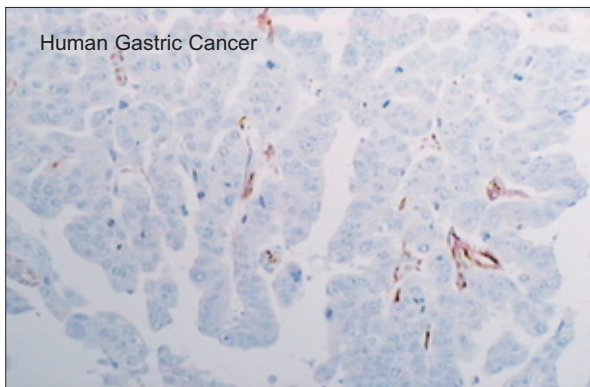
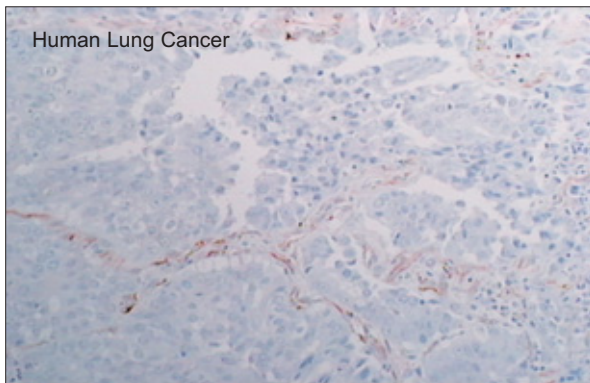


Nestin Antibody

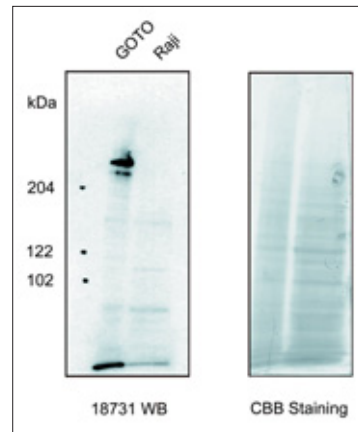
Code No.	Name		Volume	IHC	WB	
18741	Anti-Human	Nestin (N1602)	Rabbit IgG Affinity Purify	100 µg	○ 5 µg/mL	○ 1 ~ 5 µg/mL

Nestin is one of the intermediate filaments abundantly produced in the developing central nervous system and sometimes in the embryonic stage. Nestin is also reportedly detected in gliomas/glioblastomas. Thus, the antibody against nestin can be widely used as a marker for proliferating neural progenitor cells in the nervous system. Human nestin protein consists of 856 amino acids, and the molecular weight is about 240 kDa.

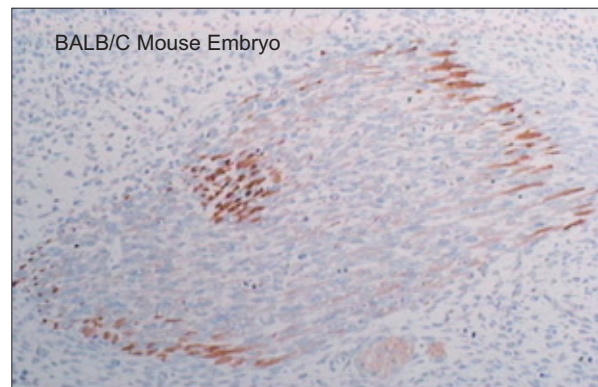
- Can be Applied to Immunohistochemistry
- Not Necessary Any Pre-Treatment
- Useful Marker As a Proliferating Neural Progenitor Cells or Glioma



- Can be Applied to Western Blotting



- Cross Reacts with Mouse (& Rat) tissue



Reference

Sugawara K, Kurihara H., Negichi M., Saito N., Nakazato Y., Sasaki T., and Takeuchi T. Nestin as a marker for proliferative endothelium in gliomas. *Lab. Invest.* **82** (3), 345-351 (2002)

Manufacturer :

Immuno-Biological Laboratories Co., Ltd.

5-1 Aramachi, Takasaki-shi, Gunma 370-0831, JAPAN

TEL: 027-310-8040

FAX: 027-310-8045

E-mail: do-ibl@ibl-japan.co.jp

URL: <http://www.ibl-japan.co.jp>

