

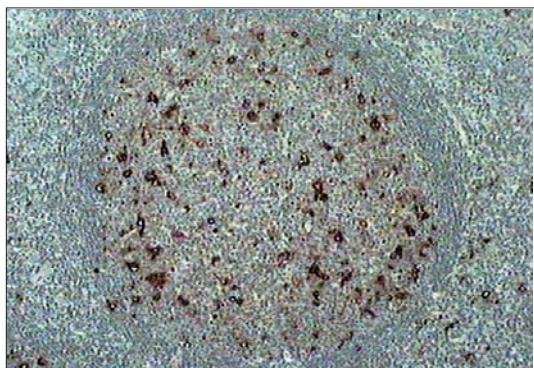
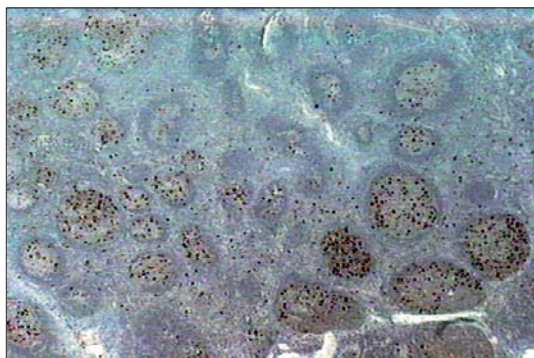
Single Stranded DNA

Code No.	Name		Volume	Application
18731	Anti-ssDNA	Rabbit IgG Affinity Purify	50 µg	IHC (Formalin fixed paraffin embedded tissue) 1 - 2.5µg/mL

The antibody specifically reacts with fragment DNA caused by apoptosis.

- Bovine fragment single stranded DNA is used as antigen
- Can be applied for all species not only for human specimens
- High purified IgG typed antibody

Human Tonsil ABC methode 0.5 µg/mL



Comparison of In situ detection of apoptosis		
	IHC using by anti-ssDNA antibody	TUNELMethod
	Simple	Complication
Proced- ure	Deparaffinize tissue sections	Deparaffinize tissue sections
	No Pretreatment	Treatment with proteinase K
	Immunohistochemistry Primary antibody reaction	DNA nick end labelling TdT buffer
	Secondary antibody reaction	TdT solution Reaction of mixture TdT buffer , Biotin-dUTP, and TdT
	ABC or Streptavidin Reagent	ABC or Streptavidin Reagent
	Substrate	Substrate
Counterstaining	Counterstaining	
View by microscope	View by microscope	
Cost Saving	Cheap	Expensive

References:

- Naruse I, et al., Antibody against single-stranded DNA detects both programmed cell death and drug-induced apoptosis. *Histochemistry* 1994; **101**, 73-78
- Kawarada Y, et al., Antibody against single-stranded DNA useful for detecting apoptotic cells recognizes hexadeoxynucleotides with various base sequences. *J. Biochem* 1998; **123**, 492-498
- Watanabe I, et al., Detection of apoptotic cells in human colorectal cancer by two different in situ methods: Antibody against single-stranded DNA and terminal deoxynucleotidyl transferase-mediated dUTP-biotin nick end-labeling (TUNEL) methods. *Jpn. J. Cancer Res.* 1999; **90**, 188-193
- Kobayashi S, et al., Detection of DNA fragmentation in human breast cancer tissue by an antibody specific to single-stranded DNA. *Breast Cancer* 1998; **5**: 47-52
- Maeda M, et al., Single-stranded DNA as an immunocytochemical marker for apoptotic change of ischemia in gerbil hippocampus. *Neuroscience Letters* 1998; **240**, 69-72