

## Cancer / Inflammation iNPH

(idiopathic normal pressure  
hydrocephalus)

**Leucine rich alpha2-glycoprotein (LRG)** is one of leucine-rich repeat family proteins. LRG has been shown to be involved in protein-protein interaction, signal transduction, and cell adhesion and development.

Recently, it was reported that serum levels of LRG were significantly elevated in Rheumatoid arthritis (RA) patients compared to healthy controls and decreased after anti-TNF therapy.

And another report indicate serum LRG levels are elevated in other inflammatory diseases compared to healthy controls, suggesting the potential of LRG as an inflammatory marker in various inflammatory diseases.

Among the diseases which should be distinguished from iNPH (idiopathic normal pressure hydrocephalus) of elderly people showing symptoms such as gait disorder and dementia, there are some neurodegenerative diseases such as Alzheimer's disease (AD), FTLD (frontotemporal lobar degeneration) and disorder associated with Parkinson's disease.

Related products >>>

## ELISA

### #27769-96Well Human LRG Assay Kit - IBL\*1\*2

- Sample : Serum, EDTA plasma, Urine, CSF
- Measurement range : 1.56 ~ 100 ng/mL
- Sensitivity : 0.17 ng/mL
- Primary Reaction : 18 hours at 4 °C

### #27798-96Well Human LRG (Mono) ELISA Kit - IBL\*1

- Sample : Serum, EDTA plasma
- Measurement range : 1 ~ 64 ng/mL
- Sensitivity : 0.06 ng/mL
- Primary Reaction : 60 minutes at 37°C

### #27770-96Well Rat LRG Assay Kit - IBL

- Sample : Serum, EDTA plasma, Urine, Supernatant
- Measurement range : 6.25 ~ 400 ng/mL
- Sensitivity : 1.68 ng/mL
- Primary Reaction : 90 minutes at 37°C

### #27785-96Well Mouse LRG Assay Kit – IBL\*3

- Sample : Serum, EDTA plasma, Supernatant\*2
- Measurement range : 0.25 ~ 16 ng/mL
- Sensitivity : 0.06 ng/mL
- Primary Reaction : 60 minutes at 37°C

\*1. 27769D100 Human LRG EIA buffer 100 (100mL) , 27798D100 Human LRG (Mono) EIA buffer 100 (100mL) are available with additional charge.

\*2. 27769 kit will be discontinued when the stocks lasts.

\*3. It may strongly react to FCS contained in supernatant used depending on the lot of FCS.

#27769 kit can measure LRG in CSF, blood or urine. It has become possible to distinguish iNPH from neurodegenerative diseases such as AD by measuring LRG in CSF.

Inflammatory Diseases

Cancers, Arthritis, Hepatitis, etc.

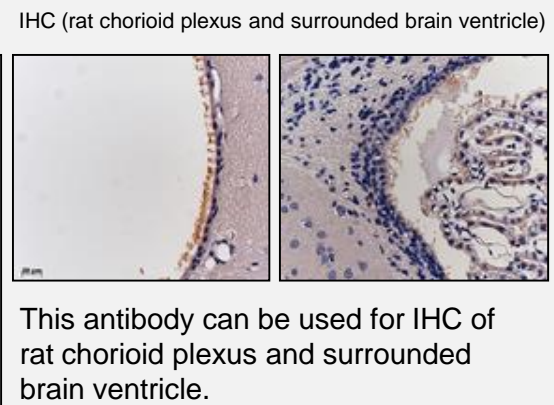
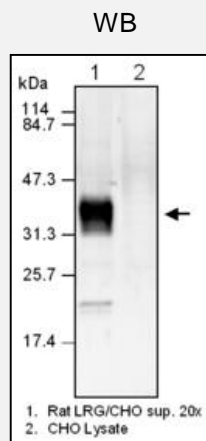
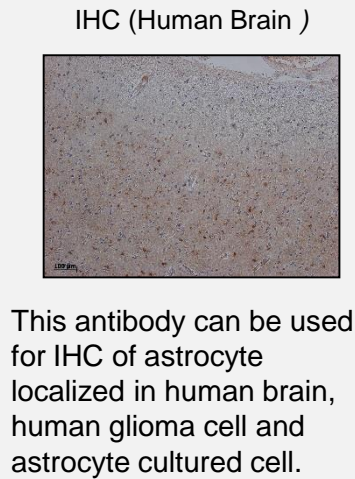
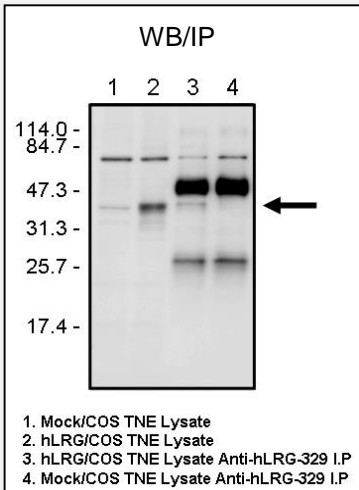
## Antibody

### #28085 Anti-Human LRG (329) Rabbit IgG Affinity Purify

- Application : IHC, WB
- Package size : 100µg, 10µg
- Species : Human

### #28069 Anti-Rat LRG (128) Rabbit IgG Affinity Purify

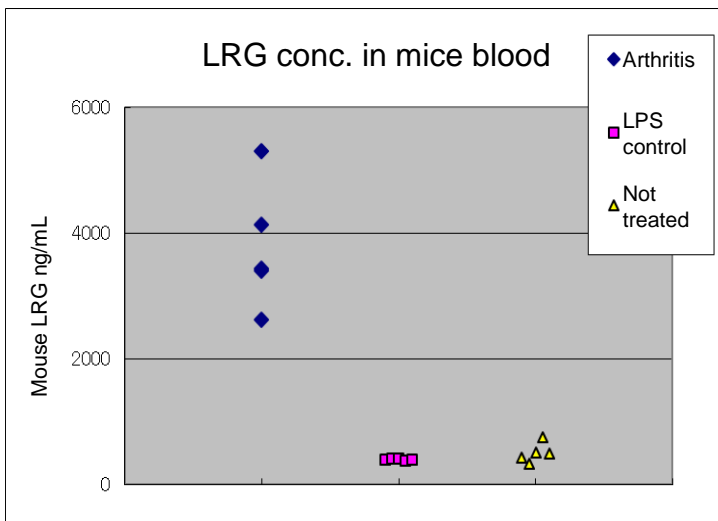
- Application : IHC, WB
- Package size : 100µg, 10µg
- Species : Rat



Data provided by: Prof. Masakazu Miyajima, Department of Neurosurgery, Juntendo University School of Medicine

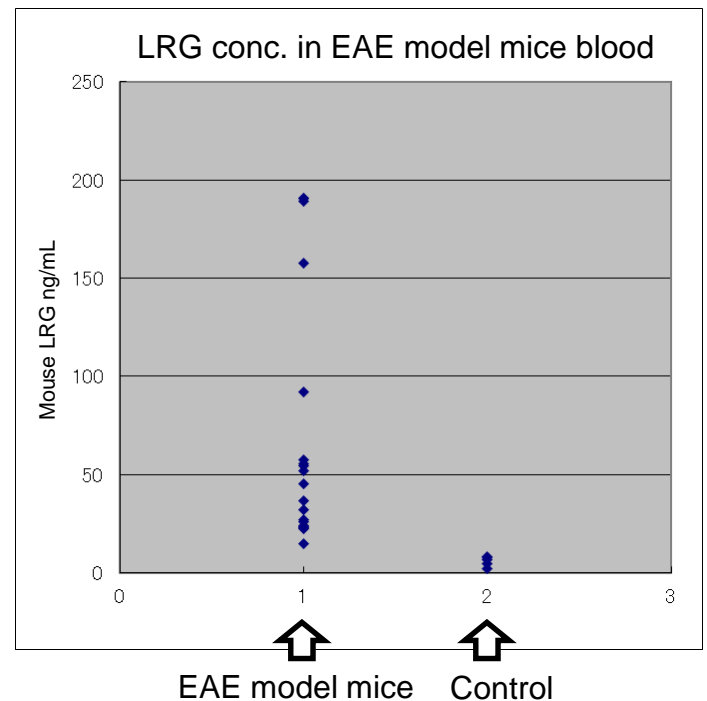
LRG has been attracting attention as active bio-marker of inflammatory related diseases.

**Fig1 : Measurement of the concentration of LRG in blood of arthritis evoked mice.**



Used monoclonal cocktail antibody for evoking arthritis. (supplied by Iwai Chemicals Company)

**Fig 2. Measurement of the concentration of LRG in blood of EAE model mice (EAE: Experimental autoimmune encephalomyelitis)**



**LRG is a useful tool as a monitoring marker of inflammatory diseases such as arthritis or EAE.**

## References

1. [Ha YJ, Kang EJ, Lee SW, Lee SK, Park YB, Song JS, Choi ST. Usefulness of serum leucine-rich alpha-2 glycoprotein as a disease activity biomarker in patients with rheumatoid arthritis. \*J Korean Med Sci.\* 2014 Sep;29\(9\):1199-204.](#)
2. [Wang X, Abraham S, McKenzie JA, Jeffs N, Swire M, Tripathi VB, Luhmann UF, Lange CA, Zhai Z, Arthur HM, Bainbridge JW, Moss SE, Greenwood J. LRG1 promotes angiogenesis by modulating endothelial TGF- \$\beta\$  signalling. \*Nature.\* 2013 Jul 18;499\(7458\):306-11.](#)
3. [Serada S, Fujimoto M, Terabe F, Iijima H, Shinzaki S, Matsuzaki S, Ohkawara T, Nezu R, Nakajima S, Kobayashi T, Plevy SE, Takehara T, Naka T. Serum leucine-rich alpha-2 glycoprotein is a disease activity biomarker in ulcerative colitis. \*Inflamm Bowel Dis.\* 2012 Nov;18\(11\):2169-79](#)
4. [Watson CJ, Ledwidge MT, Phelan D, Collier P, Byrne JC, Dunn MJ, McDonald KM, Baugh JA. Proteomic analysis of coronary sinus serum reveals leucine-rich  \$\alpha\$ 2-glycoprotein as a novel biomarker of ventricular dysfunction and heart failure. \*Circ Heart Fail.\* 2011 Mar;4\(2\):188-97.](#)
5. [Serada S, Fujimoto M, Ogata A, Terabe F, Hirano T, Iijima H, Shinzaki S, Nishikawa T, Ohkawara T, Iwahori K, Ohguro N, Kishimoto T, Naka T. iTRAQ-based proteomic identification of leucine-rich alpha-2 glycoprotein as a novel inflammatory biomarker in autoimmune diseases. \*Ann Rheum Dis.\* 2010 Apr;69\(4\):770-4](#)
6. [Two-Point Dynamic Observation of Alzheimer's Disease Cerebrospinal Fluid Biomarkers in Idiopathic Normal Pressure Hydrocephalus. Jingami N et al. \*J Alzheimers Dis.\* 2019;72\(1\):271-277.](#)
7. [Changes in serum levels of leucine-rich  \$\alpha\$ 2-glycoprotein predict prognosis in primary biliary cholangitis. Hayashi M et al. \*Hepatol Res.\* 2019 Apr;49\(4\):385-393.](#)
8. [Serum Leucine-Rich  \$\alpha\$ 2-Glycoprotein as a Biomarker for Monitoring Disease Activity in Patients with Systemic Juvenile Idiopathic Arthritis. Shimizu M et al. \*J Immunol Res.\* 2019 Feb 4;2019:3140204.](#)
9. [A novel noninvasive appendicitis score with a urine biomarker. Yap TL et al. \*J Pediatr Surg.\* 2019 Jan;54\(1\):91-96.](#)
10. [Systemic factors related to soluble \(pro\)renin receptor in plasma of patients with proliferative diabetic retinopathy. Hase K et al. \*PLoS One.\* 2017 Dec 14;12\(12\):e0189696.](#)
11. [Clinicopathological Significance of Leucine-Rich  \$\alpha\$ 2-Glycoprotein-1 in Sera of Patients With Pancreatic Cancer. Furukawa K et al. \*Pancreas.\* 2015 Jan;44\(1\):93-98.](#)
12. [Elevation of a novel angiogenic factor, leucine-rich- \$\alpha\$ 2-glycoprotein \(LRG1\), is associated with arterial stiffness, endothelial dysfunction, and peripheral arterial disease in patients with type 2 diabetes. Pek SL et al. \*J Clin Endocrinol Metab.\* 2015 Apr;100\(4\):1586-93.](#)
13. [Novel serum and urine markers for pediatric appendicitis. Kharbanda AB et al. \*Acad Emerg Med.\* 2012 Jan;19\(1\):56-62.](#)
14. [Leucine-rich  \$\alpha\$ 2-glycoprotein is a marker for idiopathic normal pressure hydrocephalus. Nakajima M et al. \*Acta Neurochir \(Wien\).\* 2011 Jun;153\(6\):1339-46; discussion 1346.](#)

Distributed by:

Related products &gt;&gt;&gt;

**Inflammatory Diseases** >

Cancers, Arthritis, Hepatitis, etc.