

Code No. 10133

**Anti-Human  
KGF (8A4) Mouse IgG MoAb**

Volume : 200 µg

Lot No. :

**Introduction** : Keratinocyte Growth Factor (KGF) is a growth factor which affects epithelial cells specifically and it hardly affects mesenchymal cells like fibroblasts. Its receptor is K-sam, and it is said that the signals of differentiation and proliferation will be specifically transmitted to various epithelial cells which express the receptors.

**Antigen** : Recombinant Human KGF (*E. coli*)

**Source** : Mouse-Mouse hybridoma  
(X63 - Ag 8.653 × BALB/c mouse spleen cells, supernatant)

**Clone** : 8A4                      **Subclass** : IgG1

**Purification** : Affinity purified with anti-mouse IgG

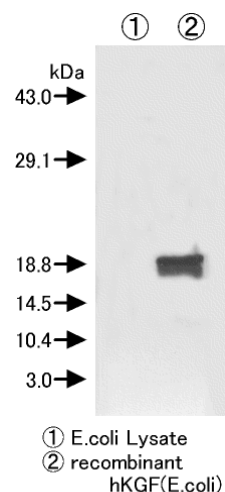
**Form** : Lyophilized product from 1 % BSA in PBS containing 0.05 % NaN<sub>3</sub>

**How to use** : 1.0 mL deionized water will be added to the product, then its concentration comes to 200 µg/mL

**Stability** : Lyophilized product, 5 years at 2 - 8 °C  
: Solution, 2 years at -20 °C

**Application** : This antibody can be used for western blotting in concentration of 5 µg/mL

**Specificity** : The specificity was confirmed by WB (refer to the right below diagram)



*For Non-Clinical Research Use Only*