



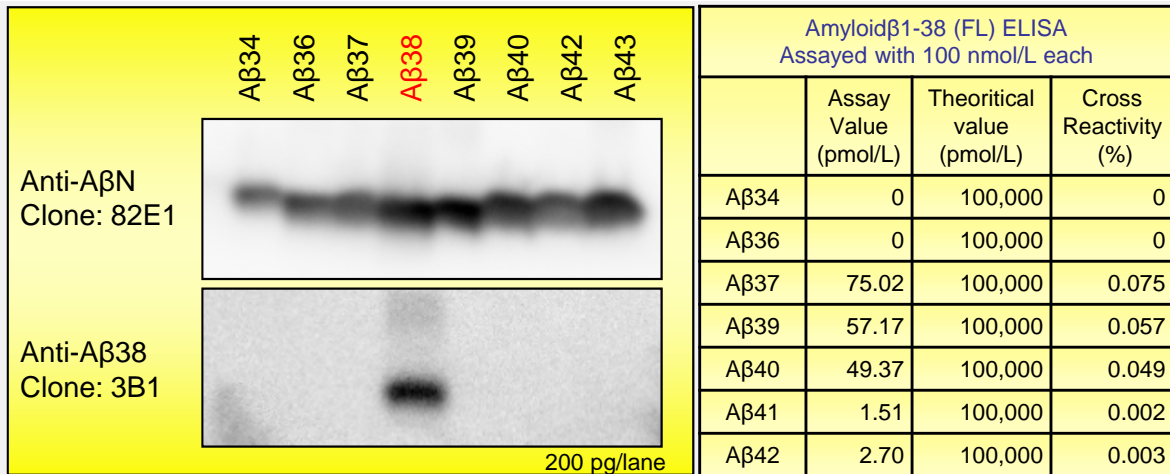
# Amyloid $\beta$ (1-38) (FL) Assay Kit - IBL

## Anti-Amyloid $\beta$ 38 (Clone: 3B1 Subclass: IgG1)

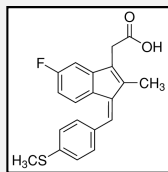
- Research Use Only -

### Assay Kits

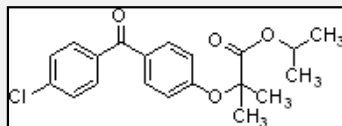
Product No.	Host	Product name	Measurement range	Measuring samples				
				Serum	EDTA-plasma	Urine	CSF	Super-natant
27717	Human	Human Amyloid $\beta$ (1-38) (FL) Assay Kit - IBL	9.38 ~ 600 pg/mL (2.27 ~ 145.23 pmol/L)				○	○



### Effect of Amyloid $\beta$ modulator

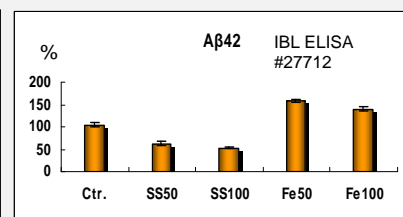
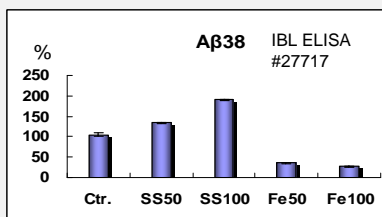
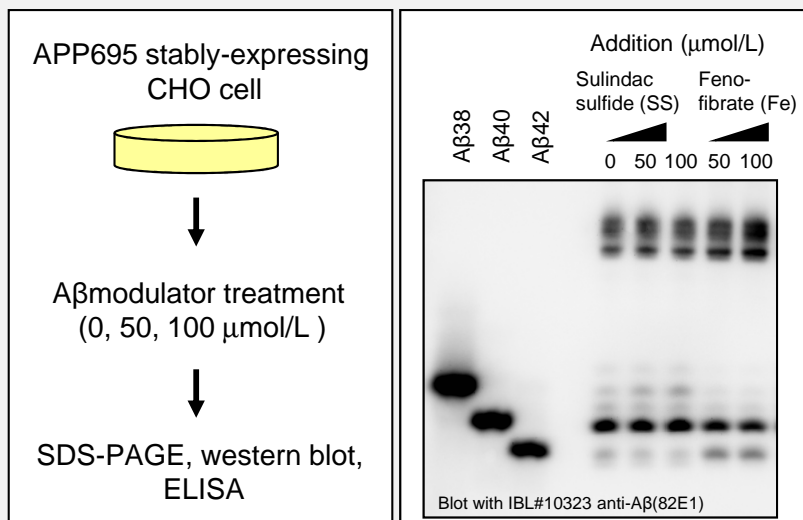


Sulindac sulfide



Fenofibrate

Increase of A $\beta$ 38 and decrease of A $\beta$ 42 are admitted as both densities of Sulindac sulfide (SS) and Fenofibrate (Fe).



Distributed by