

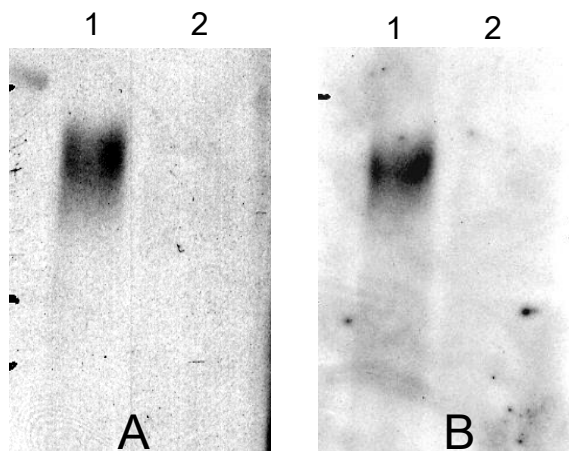


# CEA Antibody

Digestive system related tumor biomarker CEA  
(Large intestine cancer, Stomach cancer, Pancreatic cancer etc.)

Research Use Only

Carcinoembryonic antigen (CEA) was reported as cancer-specific antigen existing in human colon cancer tissue and embryo intestinal tract in 1965. However it was denied that the antigen is carcinoembryonic later. CEA exists in the blood of patients with some benign disease as well as with cancer disease. The production of CEA is observed in many cancer tissues and the CEA value in the blood reflects tumor size. Therefore, the assay is widely used in a diagnosis and in monitoring of cancer. CEA is glycoprotein which has molecular weight of about 180kDa, and is detected as broad band in  $\beta$  globulin area in electrophoresis. The bands are due to diversity of the carbohydrate portion and the carbohydrate content in CEA is 50 - 60%. The CEA includes CEA related antigens which do not cross-react with CEA antisera such as NCA (non-specific cross reacting antigen) derived from lung and spleen, NCA-2 derived from the embryo stool, NFA-1 (normal fecal antigen-1) derived from the normal adult stool and NFA-2.



Lane  
1. MKN-45 cell lysate CEA (+)  
2. COS-1 cell lysate CEA (-)

### 1<sup>st</sup> Antibody

- A. Anti-CEA moAb (1B2)
- B. Anti-CEA chimeric Ab (18-8)

### 2<sup>nd</sup> Antibody

- A. Anti-mouse IgG-HRP
- B. Anti-human(Fc)-HRP

## Antibody

Product No.	Product Name	Application	Volume	Specification / Remarks
10094	Anti-Human CEA (1B2) Mouse IgG MoAb	IHC	200 $\mu$ g 20 $\mu$ g	Does not cross reacts to NCA
11021	Anti-Human CEA (1B2) Mouse IgG MoAb	IHC	1 mL	Does not cross reacts to NCA
11022	Anti-Human CEA (2C3) Mouse IgG MoAb	IHC	1 mL	Cross reacts to NCA

## Protein

Product No.	Product Name	Volume
50010	Human CEA	0.1 mg 1 mg

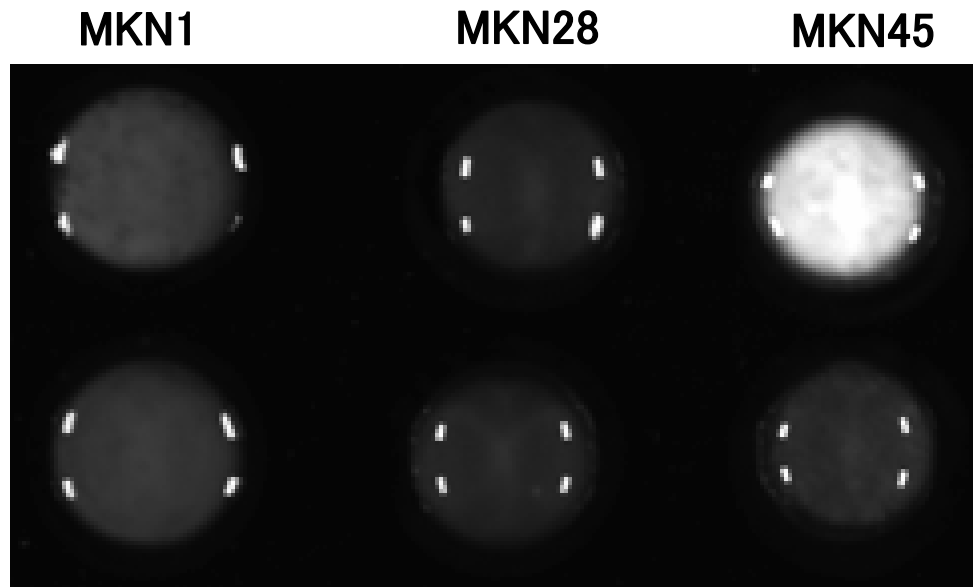
# Imaging of cancer cells using fluorescence labeled antibody

Antibody used: 10094:Anti-  
Human CEA (1B2) Mouse IgG

## Cell lines of stomach cancer

fluorescence  
labeled anti-  
CEA antibody

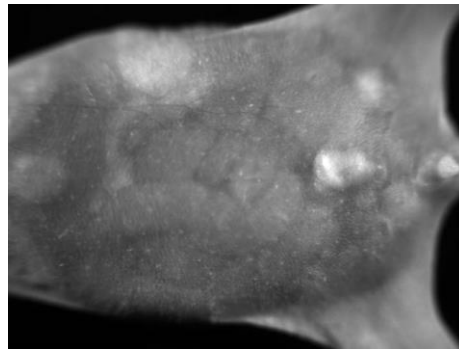
Control  
PBS



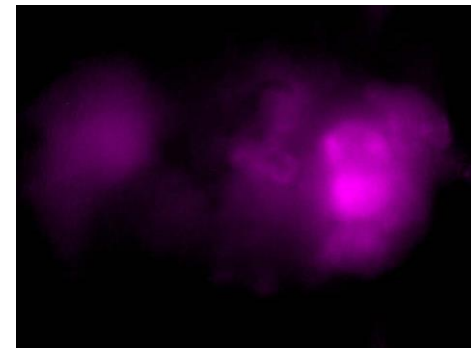
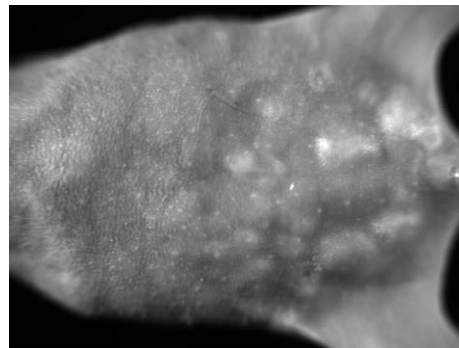
## Imaging of living bodies with cancer using fluorescence labeled antibody

Antibody used: 10094:Anti-  
Human CEA (1B2) Mouse IgG

Free-HiLyte750



HiLyte750-CEA Ab



Images provided by Prof. T Imamura, Department of Molecular Medicine for Pathogenesis, Ehime University Graduate School of Medicine.

Distributed by