

APP ELISA Comprehensive Lineup

- [#27731 h_sAPP, Total](#)
- [#27734 h_sAPP \$\alpha\$ \(h.s.\)](#)
- [#27732 h_sAPP \$\beta\$ -w \(h.s.\)](#)
- [#27733 h_sAPP \$\beta\$ -sw \(h.s.\)](#)
- [#27736 h_APP770](#)
- [#27776 h_APP \$\beta\$ CTF](#)
- [#27419 m/r_sAPP \$\alpha\$ \(h.s.\)](#)



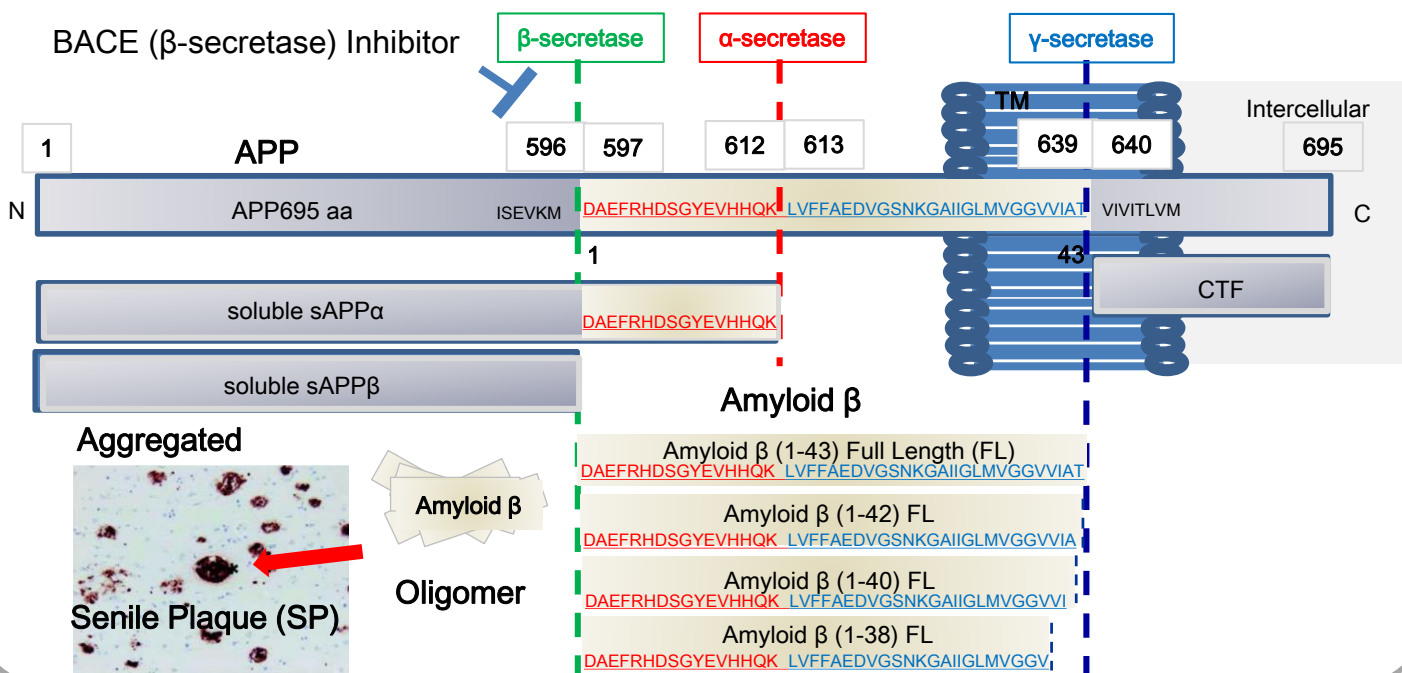
Amyloid β ELISA

- [#27717 h_A \$\beta\$ \(1-38\) FL](#)
- [#27718 h_A \$\beta\$ \(1-40\) FL](#)
- [#27719 h_A \$\beta\$ \(1-42\) FL](#)
- [#27710 h_A \$\beta\$ \(1-43\) FL](#)
- [#27713 h_A \$\beta\$ \(X-40\)](#)
- [#27711 h_A \$\beta\$ \(X-42\)](#)
- [#27729 h_A \$\beta\$ \(1-X\)](#)
- [#27418 h_A \$\beta\$ \(N3pE-40\)](#)
- [#27716 h_A \$\beta\$ \(N3pE-42\)](#)
- [#27709 h_A \$\beta\$ Toxic Oligomer](#)
- [#27725 h_A \$\beta\$ Oligomer \(82E1 specific\)](#)
- [#27720 m/r_A \$\beta\$ \(1-40\) h.s.](#)
- [#27721 m/r_A \$\beta\$ \(1-42\)](#)

h: Human m/r: Mouse/Rat FL: Full Length h.s.: High Sensitive

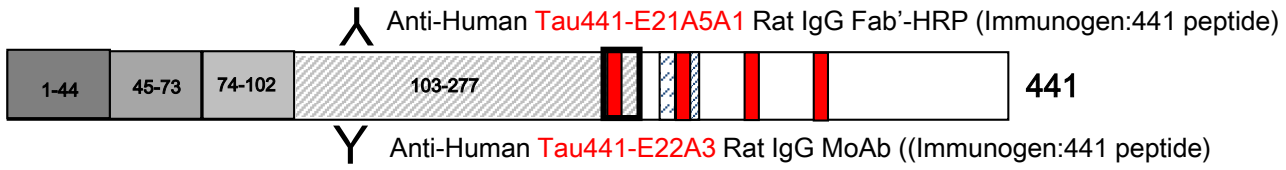
Process of Producing Amyloid β

APP695 aa – Transmembrane (TM) protein / mainly expressed in neuron cell

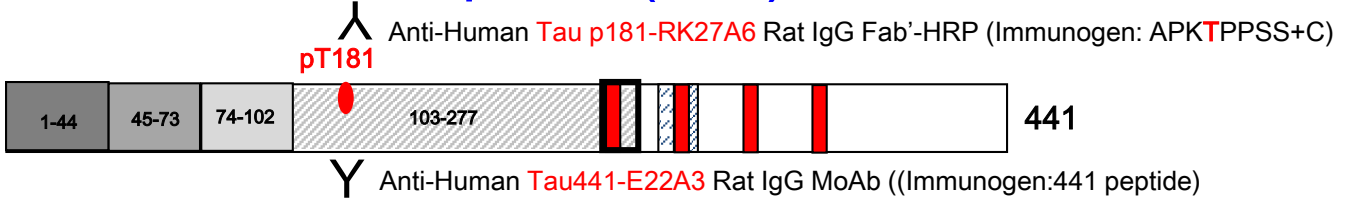


Tau ELISA

#27811 Human Total Tau



#27812 Human Phospho Tau(181P)



Tau 6 Isoforms

No 10237 Tau/Repeat Domain (2B11)

PGGGKVQIVYKP

No 10233 Amino Junction 9A1

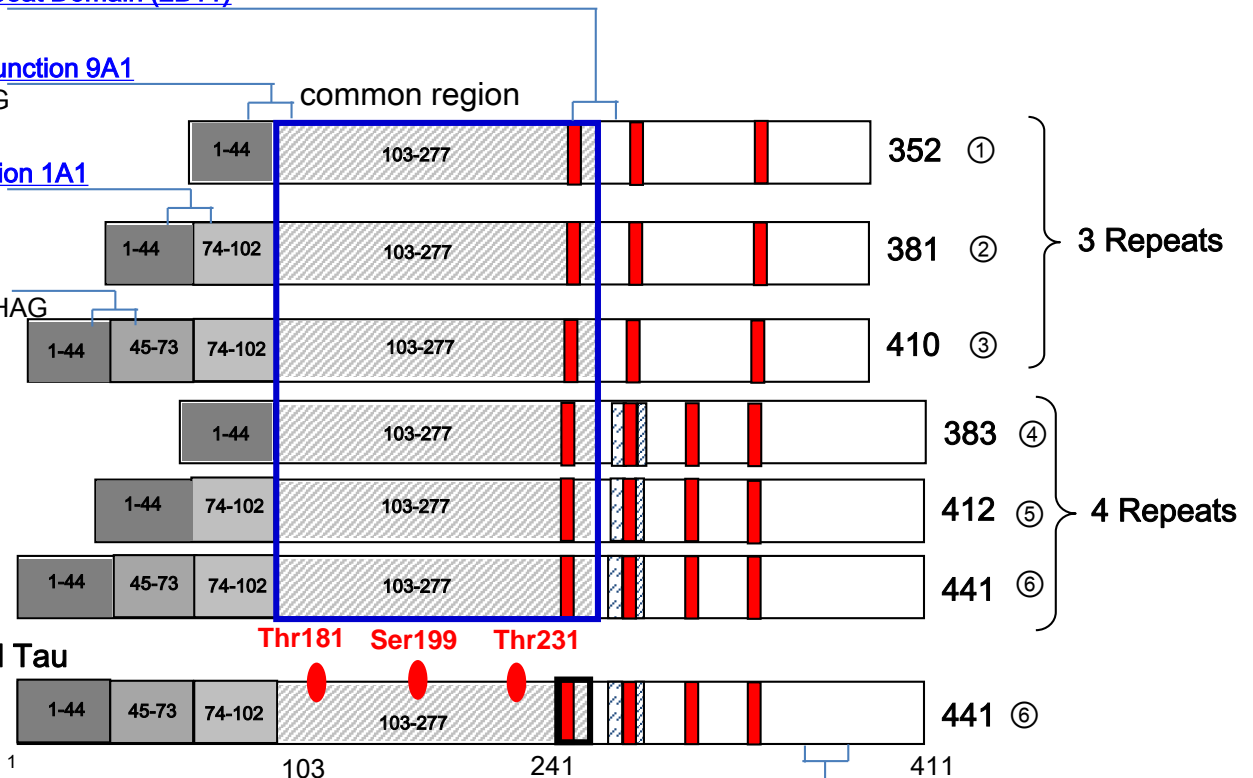
DTDAGLKAEEAGIG

No 10235 E2 Junction 1A1

KSTPTAEAGIG

No 18721 Tau Ab

AEPRQEFVEMEDHAG



No11092 Tau C5

386 TDHGA EIVYKSPVVS GDTSPR 406

Distributed by: