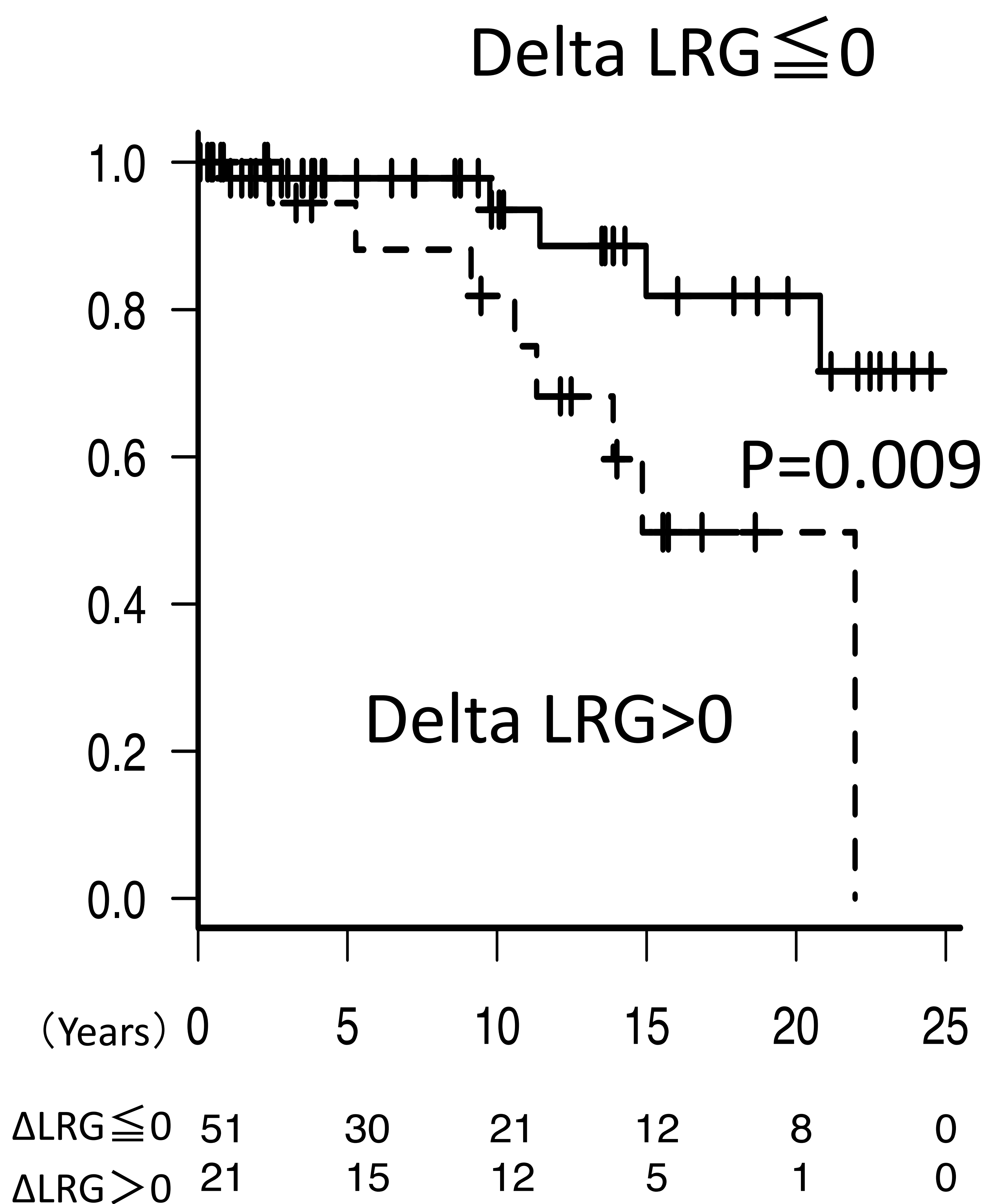
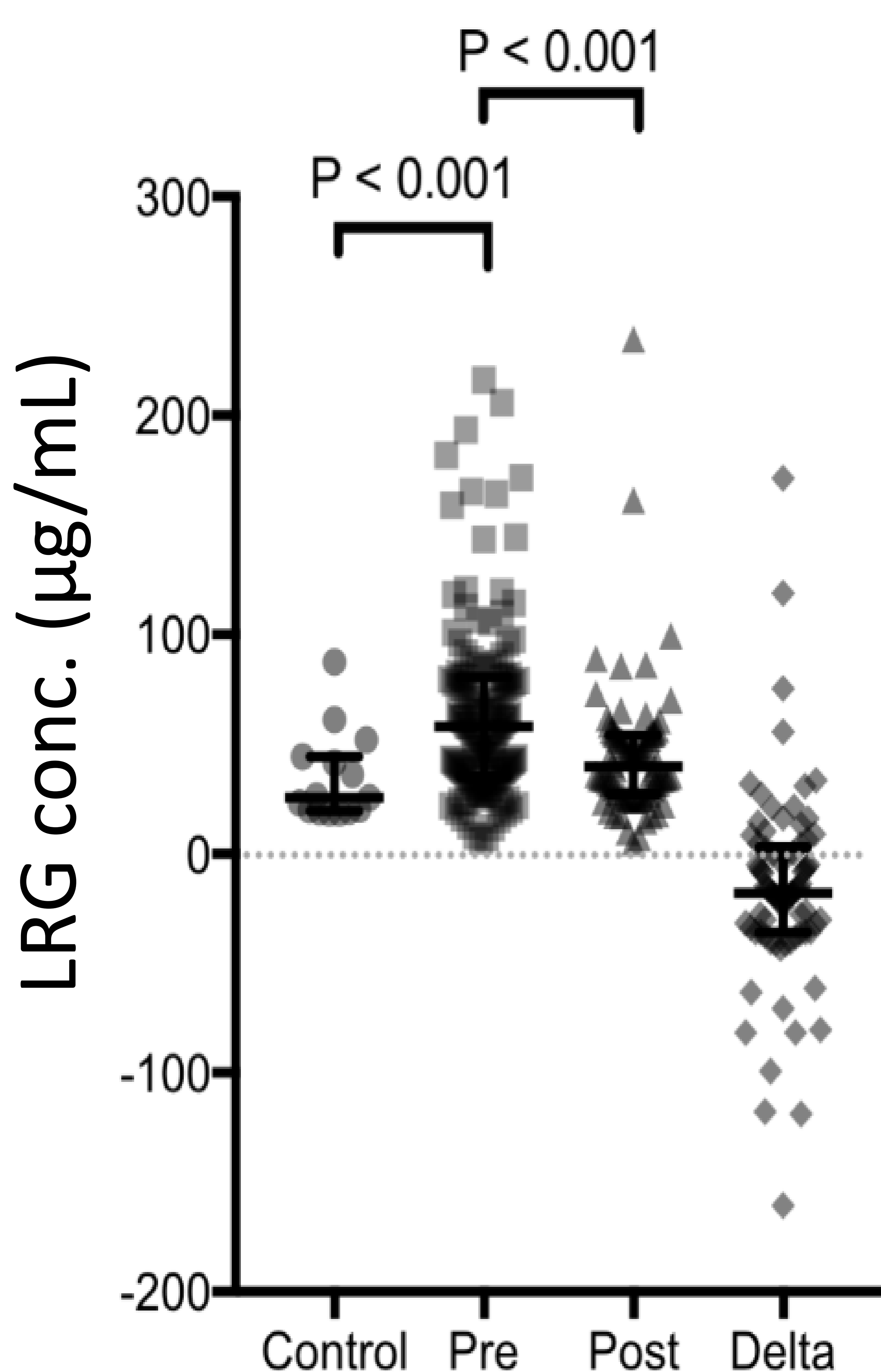




## Primary biliary cholangitis (PBC) patients' Serum LRG measurement

### Pre and after UDCA treatment



(Divided in groups  $\Delta LRG \leq 0$ ,  $> 0$ , change in numbers of patients, who do not develop any cirrhosis-related conditions)

### Development of cirrhosis-related conditions and the survival years

Data kindly provided: Hayashi M et al, Department of Gastroenterology, Fukushima Medical University School of Medicine, Fukushima, Japan

[#27769 Human LRG Assay Kit – IBL](#) was used in the study.

**【Reference】** Hayashi M et al. Changes in serum levels of leucine-rich  $\alpha 2$ -glycoprotein predict prognosis in primary biliary cholangitis. *Hepatol Res.* 2018 Nov 24.