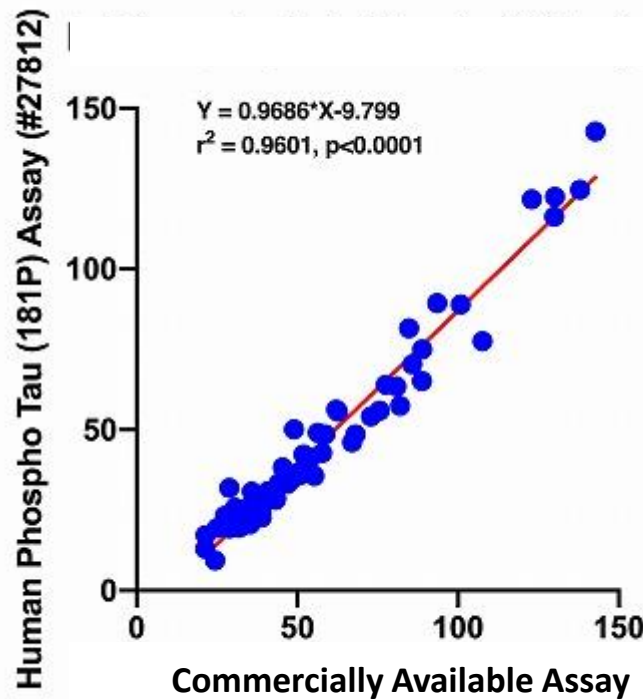


## pTau

Intended Use :	Research reagents
Measuring Method :	ELISA
Sample Types :	Human
Measuring Samples :	CSF
Measurement Range :	3.6 - 230 pg/mL
Package Size1 :	96 Well

Measurement value using this ELISA is NOT affected by hemoglobin contamination in CSF samples.

### (pg/mL) Correlation Data\*



### Interfering Substances\*

Free bilirubin up to 19.1 mg/dL, Conjugated bilirubin up to 20.7mg/dL, Hemoglobin up to 490mg/dL, Chyl up to 1,650FTU and Ascorbic Acid up to 100mg/dL do not affect on the value of measurement.

### Recovery Test Result\*

Samples (Serum Dilution Ratio)	Measurement Value (pg/mL)	Theoretical Value (pg/mL)	Recovery Rate (%)
× 2	116	117.16	99.0
× 4	117.1	116.18	100.8
× 8	120.1	115.54	104.0
× 16	115.9	115.29	100.5

The recovery rate was 82.3 - 91.3% when the standard 550pg/mL was added in diluted serum.

#### \*Quoted:

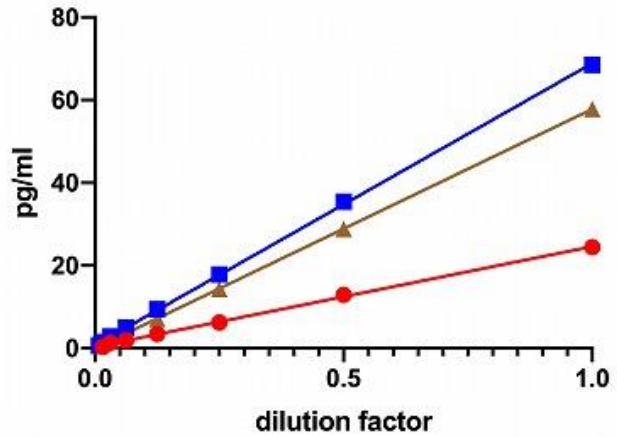
Novel ELISAs to measure total and phosphorylated tau in cerebrospinal fluid. Kawarabayashi T et al. Neurosci Lett. 2020 Feb 8:134826.

# pTau

## Precision

The measurement value against known concentration is between 80% - 120% when 3 different known concentrated control samples are measured.

## Dilution Test\*



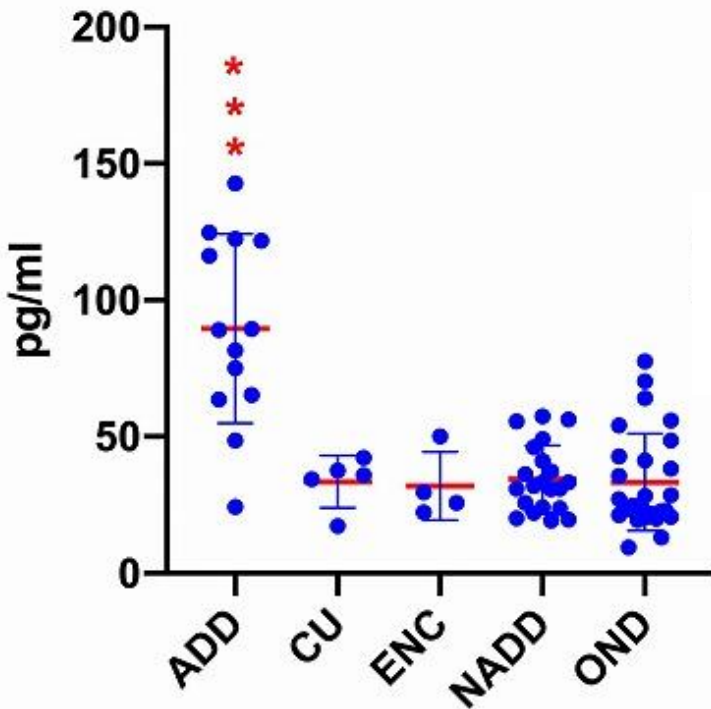
CSF Sample Dilution Test  
 ● : Encephalitis, hemolysis +  
 ■ : Encephalitis, hemolysis +  
 ▲ : (Non-Encephalitis, hemolysis -

NOT affected by hemoglobin contamination in CSF

## Intra-Assay

CV Value is less than 15% in 4 times measurements at same time using 3 different known concentrated control samples.

## Measurement Examples (CSF)\*



ADD: Alzheimer's Disease (AD) Dementia  
 CU: Cognitively unimpaired Control Subject  
 ENC: Encephalitis  
 NADD: Non-AD Dementia  
 OND: Other Neurological Diseases

\*Quoted:  
 Novel ELISAs to measure total and phosphorylated tau in cerebrospinal fluid. Kawarabayashi T et al. Neurosci Lett. 2020 Feb 8:134826.

Distributed by