

## #27601 Mouse soluble $\alpha$ -Klotho Assay Kit - IBL

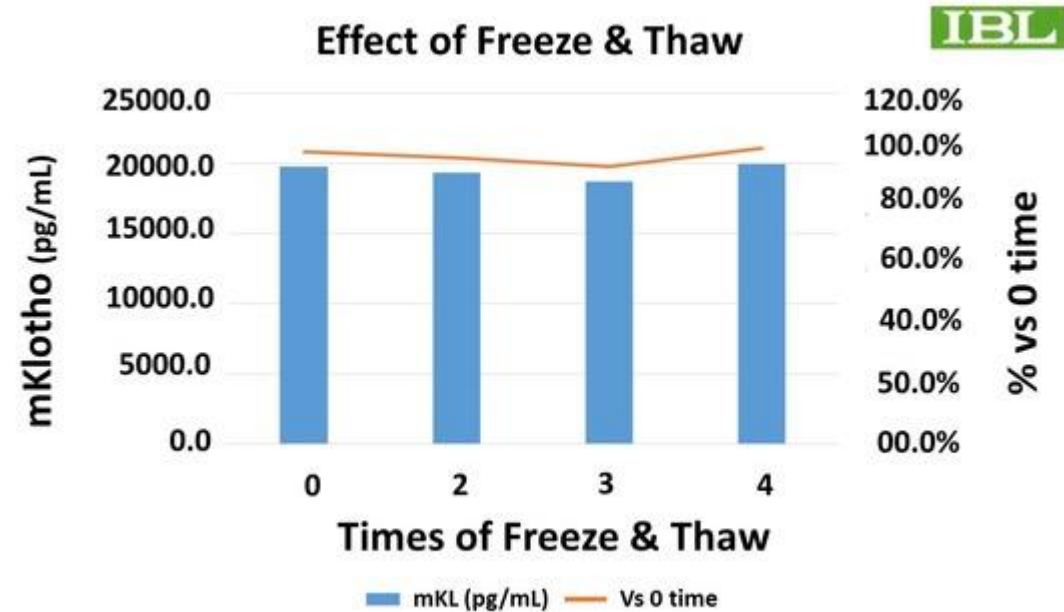
### Urine Sample Stability Test (Freeze-Thaw Repeats)

Reported: 15<sup>th</sup> Oct 2020

Date Obtained: R&D, IBL

Used Sample: BALB/c Urine

Freeze-Thaw Repeat	Measured Value (pg/mL)	Compare to 0 time
0	19,759.3	100.0%
2	19,368.3	98.0%
3	18,729.2	94.8%
4	19,969.7	101.1%



#### Results

The  $\alpha$ -Klotho in mouse urine samples was quite stable even after several times of freeze-thaw repeats.

## #27601 Mouse soluble $\alpha$ -Klotho Assay Kit - IBL

### Urine Sample Stability Test (Stored at Room Temperature at 25°C)

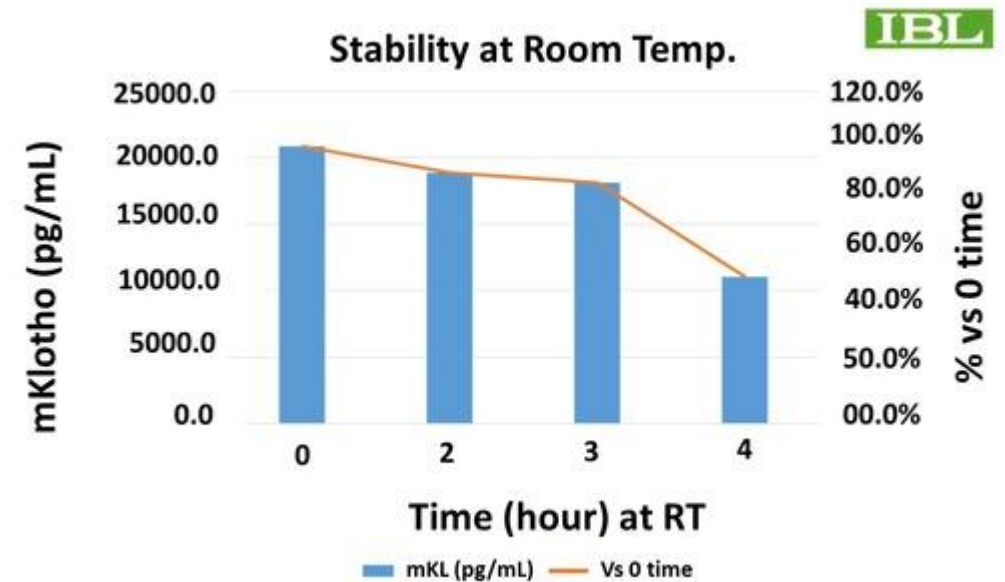
Reported: 15<sup>th</sup> Oct 2020

Date Obtained: R&D, IBL

Used Sample: BALB/c Urine

Room Temperature 25°C (Hours)	Measured Value (pg/mL)	Compare to 0hr
0	20,846.5	100.0%
2	18,848.1	90.4%
3	18,144.9	87.0%
21	11,063.2	53.1%

\*All samples were repeated one freeze-thaw.



#### Results

The  $\alpha$ -Klotho in mouse urine samples was also relatively stable up to 3 hours at room temperature.