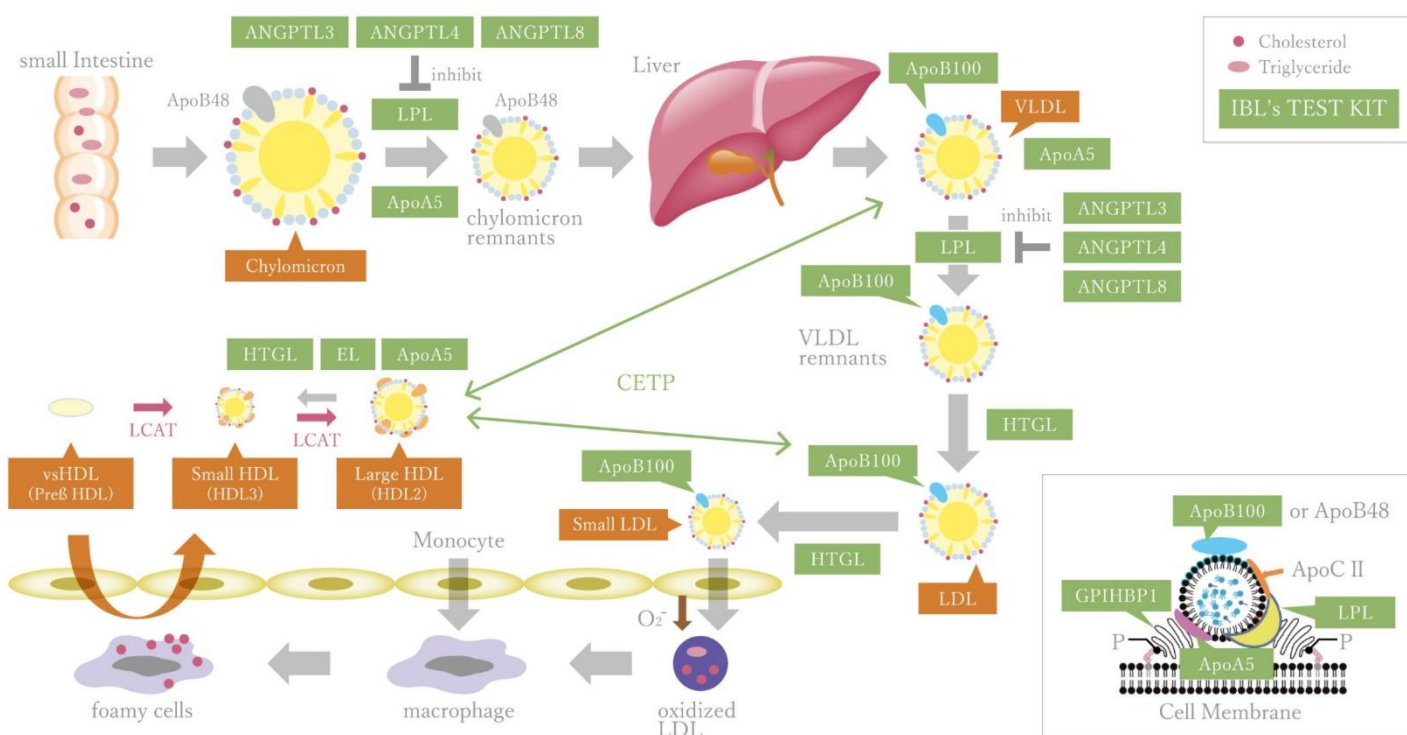


## Lipid Metabolism Biomarkers - CVD Research

Dear Valued Customers,

We hope this newsletter finds you well. Spring has come and a lot of flowers start blooming.

Spring is the season when metabolism increases. The highlight of this newsletter is **Lipid Metabolism**.



## Highlights

- The significance of triglyceride (TG) controls has been focused in recent studies.
- **LPL** is an enzyme which catabolizes TG and it has an important role for TG metabolism. Possible risk factors that positively regulate LPL activity, such as **ApoA5**, **ApoB100** and **GPIHBP1** might be targeted in drug development for TG controls.
- The new insight regarding existence of **GPIHBP1 autoantibody** as a novel pathological unit has been reported as a cause of Hypertriglyceridemia. [New England Journal of Medicine \(NEJM\)](#)

**LipoSEARCH**  
Lipoprotein Profiling Service

Verified Superiority of LipoSEARCH<sup>®</sup>

by Particle Number (PN) Analysis in Drug Evaluation

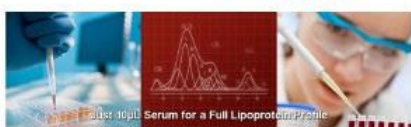
[Learn More](#)

[Special Offer]

4+20 sub classes +PN

135USD / 130Euro

For New Customers Only



## Special Offer

For New Customers!

**135USD / 130Euro**

[Learn More](#)

Aging,  
Neurodegenerative  
Alzheimer's disease (AD) etc.

Kidney Diseases

CKD, AKI, IgA Nephropathy (IgAN),  
Hypertension, etc.

Inflammatory Diseases

Cancers, Arthritis, Hepatitis, etc.

Glucose /  
Lipid Metabolism

Diabetes, Hyperlipidemia, Cardiovascular Events, etc.