



# Gd-IgA1

Widely Used ELISA for  
**Clinical Research**

# (KM55)

- ✓ Gold Standard
- ✓ Global Supply
- ✓ Blood & Urine

## ELISA & Antibody

### Gd-IgA1 ELISA

Code: 27600  
 Sample: Serum, Plasma, Urine  
 Assay Range: 1.56 ~ 100 ng/mL  
 Sensitivity: 0.488 ng/mL  
 Assay Time: 2.5 hours



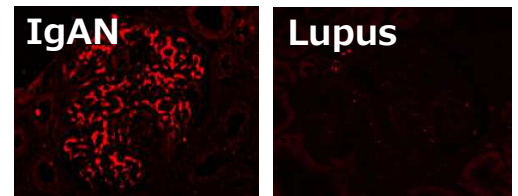
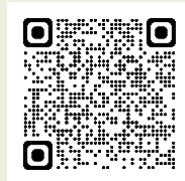
### Lot-to-Lot Stability

Lot	2K-026	2D-128	2J-111	2K-230	2D-313			
【Control Samples】	Measurement Value (pg/ml)					Average	STDEV	CV%
High :51.64pg/ml	56.74	48.79	54.02	55.50	51.15	52.18	2.80	5.4
	49.61	52.76	51.63	47.98	51.68			
	56.52	48.22	52.28	53.75	52.03			
Low :16.73pg/ml	18.81	17.29	18.49	18.38	18.71	18.15	0.74	4.1
	17.24	18.37	19.11	17.32	19.07			
	18.63	16.74	18.37	17.51	18.20			

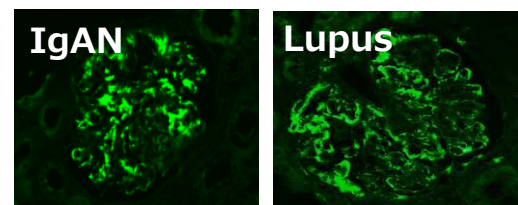
**KM55**

### KM55 Monoclonal Antibody

Code: 10777  
 Application: IHC  
 Species: Human  
 Size: 10µg, 100µg



**Anti-IgA**



**This product is not intended for diagnostic or medical purposes.**

This product is not intended for diagnostic or medical purposes.

PMID	Cite
35570983	Safety, Tolerability, Pharmacokinetics, and Pharmacodynamics of VIS649 (Sibeprenlimab), an APRIL-Neutralizing IgG2 Monoclonal Antibody, in Healthy Volunteers. M Mathur et al. <i>Kidney Int Rep.</i> 2022 Feb 8;7(5):993-1003..
37114051	Current understanding of IgA antibodies in the pathogenesis of IgA nephropathy. Y Nihei et al. <i>Front Immunol.</i> 2023 Apr 11;14:1165394.
36862654	cnm-positive <i>Streptococcus mutans</i> is associated with galactose-deficient IgA in patients with IgA nephropathy. Misaki T, et al. <i>PLoS One.</i> 2023 Mar 2;18(3):e0282367.
35683557	Galactose-Deficient IgA1 as a Candidate Urinary Marker of IgA Nephropathy. Y Fukao et al. <i>J Clin Med.</i> 2022 Jun 2;11(11):3173. .
34570260	IgA glycosylation and immune complex formation in IgAN. Suzuki, H et al. <i>Semin Immunopathol.</i> 2021 Oct;43(5):669-678.
33818625	IgA vasculitis with nephritis: update of pathogenesis with clinical implications. M.C. Hastings et al. <i>Pediatr Nephrol.</i> 2022 Apr;37(4):719-733.
37286948	Serum levels of galactose-deficient IgA are elevated in patients with IgA nephropathy but do not correlate to disease activity or progression. S Eliasdottir et al. <i>BMC Nephrol.</i> 2023 Jun 7;24(1):160.
35887995	Associations between Biomarkers of Complement Activation, Galactose-Deficient IgA1 Antibody and the Updated Oxford Pathology Classification of IgA Nephropathy. Y-T Juan et al. <i>J Clin Med.</i> 2022 Jul 21;11(14):4231.
34764788	Relationship between Gd-IgA1 and TNFR1 in IgA nephropathy and IgA vasculitis nephritis in children – multicenter study. M Mizerska-Wasiak et al. <i>Cent Eur J Immunol.</i> 2021;46(2):199-209.
33741175	Measurement of galactosyl-deficient IgA1 by the monoclonal antibody KM55 contributes to predicting patients with IgA nephropathy with high risk of long-term progression. L Martín-Penagos et al. <i>Nefrologia (Engl Ed).</i> 2021 May-Jun;41(3):311-320.
34177889	Alternative Complement Pathway Is Activated and Associated with Galactose-Deficient IgA1 Antibody in IgA Nephropathy Patients. Y-L Chiu et al. <i>Front Immunol.</i> 2021 Jun 10;12:638309.



**More  
References**



**Contact Us**



Unique & Niche,  
Antibody & ELISA

