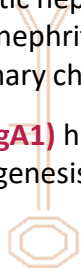


### Highlights – Galactose-deficient IgA1 (Gd-IgA1)

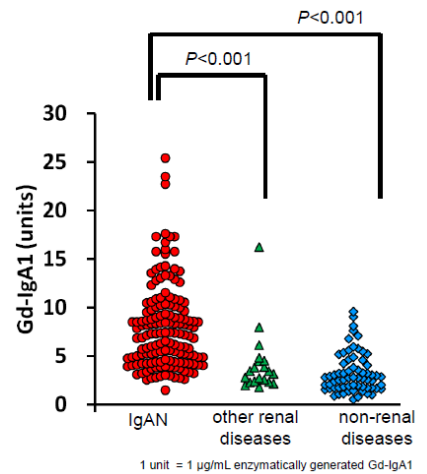
Dear Valued Customers,  
We hope this newsletter finds you well. After this summer with record-breaking heat, it is getting cooler everyday here in Japan. This newsletter focus about IgA Nephropathy.

**Chronic Kidney Disease (CKD)** is a progressive loss in kidney function and it affects 1 in 10 people around the world. Major causes of CKD are type 2 diabetic nephropathy, polycystic kidney disease and chronic glomerulonephritis. **IgA nephropathy (IgAN)** is the most common type of primary chronic glomerulonephritis.

**Galactose-deficient IgA1 (Gd-IgA1)** has been reported as a critical effector molecule in the pathogenesis and progression of IgAN.



Gd-IgA1revel in Serum



### 17th International Symposium on IgA Nephropathy 28–30 September 2023 in TOKYO



17th International Symposium on IgA Nephropathy was held in Tokyo on 28 - 30 September. We exhibited there and our KM55 related products attracted a lot of attention.

[Learn More](#) about KM55

#### ELISA

##### #27600 Gd-IgA1 Assay Kit – IBL

- Sample: Serum, EDTA plasma, Urine
- Measurement range: 1.56 ~ 100 ng/mL
- Sensitivity: 0.488 ng/mL
- Total Time: Approx. 2.5hr



#### KM55

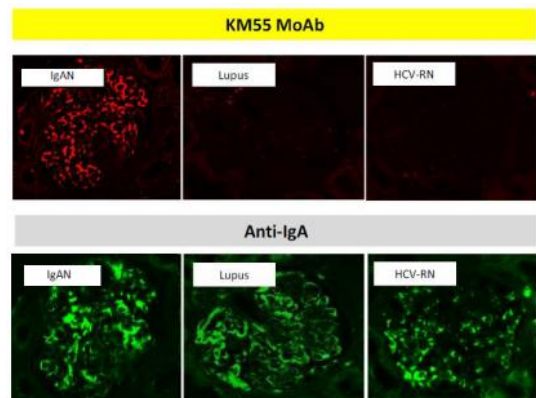
##### #10777 Anti-Human Gd-IgA1(KM55) Rat IgG MoAb

- Application : IHC
- Species : Human
- Package size : 10µg, 100µg

##### IHC Protocol

References: [references](#) | [Immuno-Biological Laboratories Co.,Ltd.](#)  
| [IBL \(ibl-japan.co.jp\)](http://ibl-japan.co.jp)

*\*For research use only, not for use in diagnostic procedures.*



**Aging, Neurodegenerative**  
Alzheimer's disease (AD), etc.

**Kidney Diseases**  
CKD, AKI, IgA Nephropathy (IgAN), Hypertension, etc.

**Inflammatory Diseases**  
Cancers, Arthritis, Hepatitis, etc.

**Glucose / Lipid Metabolism**  
Diabetes, Hyperlipidemia, Cardiovascular Events, etc.