

Human Phospho Tau(217P) ELISA Kit - IBL

96 Well

Please read carefully this instruction prior you use this assay kit.

INSTRUCTIONS FOR USE

This product is for research use only and is not intended for diagnostic use.

KIT COMPONENT

1	Precoated plate: Anti-Human Tau 441 E17A1 Mouse IgG MoAb	96Well x 1
2	Labeled antibody conc.: (30X) HRP conjugated Anti-Human Tau p217 69A10A Rat IgG MoAb Fab'	0.4mL x 1
3	Standard: Recombinant Human Tau441	0.5mL x 2
4	EIA buffer	30mL x 1
5	Solution for labeled antibody	12mL x 1
6	Chromogen: TMB solution	15mL x 1
7	Stop solution	12mL x 1
8	Wash buffer conc.	50mL x 1

MEASURING SAMPLES

Human cerebrospinal fluids

PRINCIPLE

This kit is a solid phase sandwich ELISA (Enzyme-linked Immunosorbent Assay). As a primary antibody is coated on a plate, samples and standard are added into the wells for 1st reaction. After the reaction, HRP-conjugated secondary antibody is added into the wells for 2nd reaction. After washing away unbound the secondary antibody, Tetra Methyl Benzidine (TMB) is added to the wells and color develops.

OPERATING PRECATION

- Test samples should be measured soon after collection. For storage of samples, store them frozen and do not repeat freeze/thaw cycles. Thaw the test samples at a low temperature and mix them completely before measurement.
- Test samples should be diluted with "4, EIA buffer" contained in this kit.
- Duplicate measurement of test samples and standards is recommended.
- Standard curve should run for each assay.
- Use test samples in neutral pH range. The contaminations of organic solvent may affect the measurement.
- All reagents should be brought to room temperature (R.T.) and mixed completely and gently before use. After mixing them, make sure of no change in quality of the reagents.
- Use only "8, Wash buffer conc." contained in this kit for washing the precoated plate. Insufficient washing may lead to the failure in measurement.
- Set the wait time (40 seconds) when you use a microplate washer. When you use a multi-channel pipette for washing process, after fill wash buffer in each well, immediately turn the plate upside down and shake it off to completely remove the wash buffer. Perform this washing procedure specified number of times. Wash the plate properly as instructed to avoid any insufficient wash.
- Carefully tap the plate against a clean paper towel without contacting with inside of each well to completely remove all the liquid or the washing buffer after repeated the determined number of wash.
- "6, Chromogen - TMB solution" should be stored in the dark due to its sensitivity against light. It should be also avoided contact with metals. Required quantity should be prepared into a collecting container for each use.
- After adding TMB solution into the wells, the liquid in the wells gradually changes the color in blue. In this process the plate should be in dark. Remained TMB solution in the collecting container should not be returned into the original bottle of TMB solution to avoid contamination.
- Measurement of O.D. should be done within 30 minutes after addition of "7, Stop solution".

OPERATION MANUAL AND DOSAGES**1. Materials needed but not supplied.**

Plate reader	Micropipette and tip
Test tubes for dilution	Measuring cylinder and beaker
Deionized water	Plate washer or washing bottle
Paper towel	Collecting container
Refrigerator	(i.e. clean disposable test tube)

2. Preparation**(1) Preparation of wash buffer**

Dilute "8, Wash buffer conc." 40-fold with deionized water. The diluted one is used for the assay as a wash buffer. Adjust the required quantities if needed.

(2) Preparation of labeled antibody

Dilute "2, Labeled antibody conc." 30-fold with "5, Solution for labeled antibody" using a prepared collecting container.

Example)

In case you use one strip (8 well), the required quantity of Labeled antibody is 800 μ L. (Dilute 30 μ L of "2, Labeled antibody Conc." with 870 μ L of "5, Solution for labeled antibody" and mix it. And use 100 μ L the mixed solution in each well.)
This operation should be done just before applying labeled antibody.
The remaining "2, Labeled antibody Conc." should be stored at 4°C in a firmly sealed vial.

(3) Preparation of standard

Add 0.5 mL of "4, EIA buffer" into the vial of "3, Standard" and completely dissolve it. Concentration of the standard is 1,420 pg/mL. The standards enclosed in this kit can be frozen and stored after reconstitution. However the freeze-thaw shall not be repeated.

Prepare 7 test tubes for dilution of the standard and adding 230 μ L of the EIA buffer into each tube.

Put 230 μ L of 1,420 pg/mL standard into the tube 710 pg/mL (Tube-1) and gently mix it. Afterword, put 230 μ L of the mixed liquid of tube-1 into the tube 355 pg/mL (Tube-2) and gently mix it. Dilute two-fold standard solution in series to set up 7 points of diluted standard between 710 pg/mL and 11.09 pg/mL.

Tube-1	710	pg/mL
Tube-2	355	pg/mL
Tube-3	177.5	pg/mL
Tube-4	88.75	pg/mL
Tube-5	44.38	pg/mL
Tube-6	22.19	pg/mL
Tube-7	11.09	pg/mL

(4) Preparation of test samples

Dilute test samples with "4, EIA buffer" contained in this kit as follows.

Human cerebrospinal fluids : 2-4-fold.

3. Measurement Procedure**(1) Add test sample blank**

Determine wells for test sample blank. Put 100 μ L each of "4, EIA buffer" into the wells.

(2) Add prepared test samples and standard

Put 100 μ L prepared test samples and 100 μ L prepared standard into appropriate wells.

(3) Incubation with plate lid (1st reaction).**(4) Liquid removal. (Refer to No. 9 described in OPERATING PRECATION.)****(5) Add prepared labeled antibody**

Put 100 μ L prepared labeled antibody into the wells.

(6) Incubation with plate lid (2nd reaction).**(7) Washing (Refer to No. 8 and 9 described in OPERATING PRECATION.)**

Wash the plate with the prepared wash buffer and remove all liquid completely.

(8) Add "6, Chromogen - TMB solution"

Put 100 μ L the TMB solution into the wells.

(9) Incubation in dark**(10) Add "7, Stop solution"**

Put 100 μ L the Stop solution into the wells.

(11) Determination of optical density (O.D.)

Remove any dirt or drop of water on the bottom of the plate and confirm there is no bubble on the surface of the liquid. Then, measure the both O.D. of standard and the test samples against a test sample blank.

Measurement wavelength: 450 nm. In case of 2 wavelengths:

Main wavelength is 450nm. Sub-wavelength is between 600 and 650 nm.

Table for measurement procedure

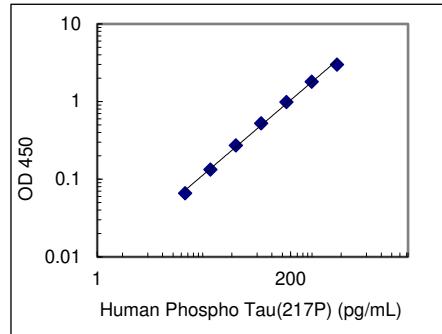
	Test samples	Standard	Test sample blank
Reagents	Test samples 100 μ L	Diluted Standard 100 μ L	EIA buffer 100 μ L
1st reaction	Incubation for overnight at 2~8°C with plate lid		
Liquid removal	Remove all liquid after the reaction (Refer to No. 9 described in OPERATING PRECATION.)		
Labeled antibody	100 μ L	100 μ L	100 μ L
2nd reaction	Incubation for 30 minutes at 2~8°C.		
Washing	4 times (wash buffer more than 350 μ L) (Refer to No. 8 and 9 described in OPERATING PRECATION.)		
TMB solution	100 μ L	100 μ L	100 μ L
Chromogenic reaction	Incubation for 30 minutes at R.T. (shielded).		
Stop solution	100 μ L	100 μ L	100 μ L
Measuring O.D.	450 nm / 600~650 nm		

CALCULATION OF TEST RESULT

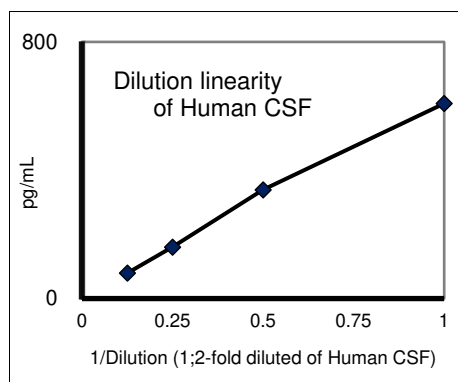
- 1 Plot the concentration of the standard on the x-axis and its O.D. on the y-axis. Draw a standard curve by applying appropriate regression curve on each plot (i.e. quadratic regression of double logarithm conversion).
- 2 Read the concentration by applying the absorbance of the test samples on a standard curve.
- 3 Calculate the concentration of the test samples by multiplying dilution ratio of test samples on the value.

Example of standard curve and measured value

Standard (pg/ml)	O.D. (450nm)
710.	3.001
355.	1.812
177.5	0.991
88.75	0.527
44.38	0.275
22.19	0.134
11.09	0.067

**PERFORMANCE AND CHARACTERISTICS**

- 1 **Sensitivity**
8.07 pg/mL (Calculated by NCCLS method using the standard.)
- 2 **Measurement range**
11.09 ~ 710 pg/mL
- 3 **Dilution linearity**

**4 Added recovery assay**

Specimen	Additive Amount (pg/mL)	Theoretical Value (pg/mL)	Measurement Value (pg/mL)	%
Human CSF (x2)	750.00	750.00	536.31	71.5
	375.00	375.00	275.07	73.4
	187.50	187.50	145.28	77.5
Human CSF (x4)	750.00	750.00	771.25	102.8
	375.00	375.00	407.41	108.6
	187.50	187.50	214.93	114.6

5 Intra-assay

Measurement value (pg/ml)	SD (pg/ml)	CV (%)	n
174.89	5.02	2.9	24
47.81	1.80	3.8	24
22.86	1.05	4.6	24

6 Inter-assay

Measurement value (pg/ml)	SD (pg/ml)	CV (%)	n
190.99	14.31	7.5	11
52.29	5.09	9.7	11
22.61	2.15	9.5	11

7 Specificity

Specifically detect human phospho Tau(217P) in human CSF.

8 Interfering Substances

Hemolyzed hemoglobin does not affect on the value of measurement up to 520 mg/dL.
Free bilirubin does not affect on the value of measurement up to 19.6 mg/dL.
Conjugated bilirubin does not affect on the value of measurement up to 20.5 mg/dL.
Chyle does not affect on the value of measurement up to 1700 FTU.

PRECAUTION FOR INTENDED USE AND/OR HANDLING**1 Precaution for handling (Hazard prevention)**

- (1) Treat the components carefully and wash hands after handling it.
- (2) "7, Stop solution" is a strong acid substance (1N Sulfuric acid). Therefore, it should be careful for the treatment and do not contact your skin and clothes with it. It also needs to pay attention to the disposal of it.

2 Precaution for intended use

- (1) "3, Standard" is lyophilized products. It should be careful to open this vial.
- (2) All reagents should be stored at 2 - 8°C.
- (3) Precipitation can be seen in "4, EIA buffer", "5, Solution for labeled antibody" and "8, Wash buffer conc.", however, it does not affect its performance.
- (4) Do not mix or replace the reagents with the reagents from a different lot or kit.
- (5) Do not use expired reagents.

3 Precaution for disposal

- (1) Dispose used materials after rinsing them with large quantity of water.

STORAGE AND THE TERM OF VALIDITY

Storage Condition: 2 - 8°C
The expiry date is specified on the outer box.

PACKAGE UNIT AND PRODUCT NUMBER

Package unit: 96 Well
Product number: 27904

REFERENCE

1. Kawarabayashi T, Nakamura T, Miyashita K, Segawa T, Fukamachi I, Sugawara T, Oka H, Ishizawa K, Amari M, Kasahara H, Makioka K, Ikeda Y, Takatama M, Shoji M.
Clinical Evaluation of Cerebrospinal Fluid p217tau and Neurofilament Light Chain Levels in Patients with Alzheimer's Disease or Other Neurological Diseases.
J Alzheimers Dis. 2023;96(4):1623-1638.

CONTACT DETAILS

Immuno-Biological Laboratories Co., Ltd.
1091-1 Naka, Fujioka-Shi, Gunma 375-0005, Japan
URL: <https://www.ibl-japan.co.jp/en/> E-mail: do-ibl@ibl-japan.co.jp